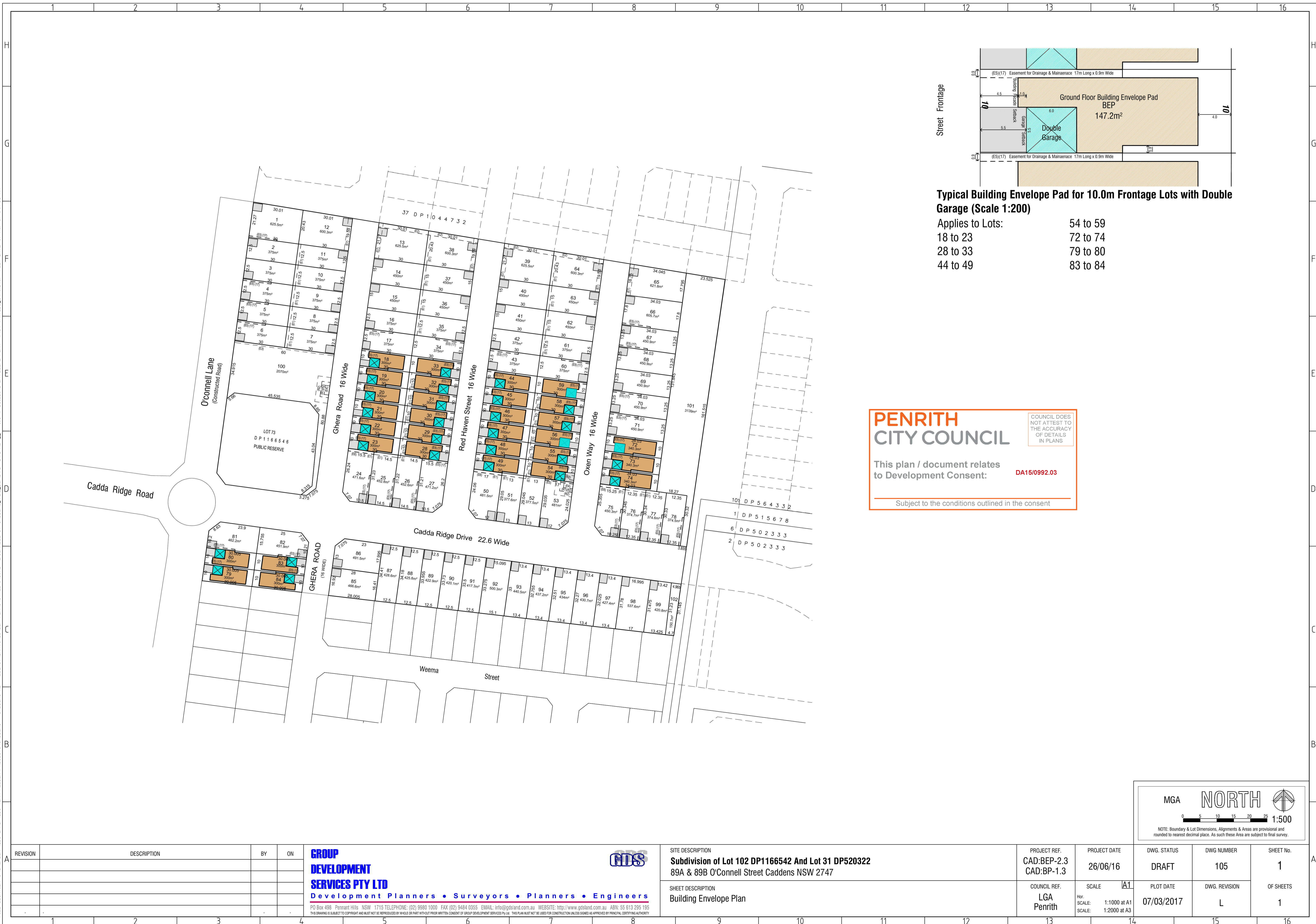


FILE LOCATION: C:\DRIPBOX\GDS\LAND\GDS\TEAM\PROJECTS\CADDENS - CADDENS RD - LEGACY\DRAWINGS\REP PLANS\STAGE 1\US98\O'CONNELL ST CADDENS_V2.2-BEP-DWG -JWG.MD -- US O BUILDING ENVELOPE PLAN -GPlot WITHGDS_Structured- PLOT DATE: 07-Mar-17 9:07:38 AM



PENRITH
CITY COUNCIL

COUNCIL DOES NOT ATTEST TO THE ACCURACY OF DETAILS IN PLANS

This plan / document relates to Development Consent:

DA15/0992.03

Subject to the conditions outlined in the consent

MGA

NORTH

0 5 10 15 20 25 1:500

NOTE: Boundary & Lot Dimensions, Alignments & Areas are provisional and rounded to nearest decimal place. As such these Areas are subject to final survey.

REVISION	DESCRIPTION	BY	ON

GROUP DEVELOPMENT SERVICES PTY LTD

Development Planners • Surveyors • Planners • Engineers

PO Box 498 Penrith Hills NSW 1715 TELEPHONE: (02) 9980 1000 FAX (02) 9484 0355 EMAIL: info@gdsland.com.au WEBSITE: http://www.gdsland.com.au ABN: 55 613 295 195
THIS DRAWING IS SUBJECT TO COPYRIGHT AND MUST NOT BE REPRODUCED IN WHOLE OR PART WITHOUT PRIOR WRITTEN CONSENT OF GROUP DEVELOPMENT SERVICES PTY LTD. THIS PLAN MUST NOT BE USED FOR CONSTRUCTION UNLESS ISSUED AS APPROVED BY PRINCIPAL CERTIFYING AUTHORITY

GDS

GROUP DEVELOPMENT SERVICES PTY LTD

<div>SITE DESCRIPTION</div> <div>Subdivision of Lot 102 DP1166542 And Lot 31 DP520322 89A & 89B O'Connell Street Caddens NSW 2747</div>	<div>PROJECT REF:</div> <div>CAD:BEP-2.3 CAD:BP-1.3</div>	<div>PROJECT DATE</div> <div>26/06/16</div>	<div>DWG. STATUS</div> <div>DRAFT</div>	<div>DWG. NUMBER</div> <div>105</div>	<div>SHEET No.</div> <div>1</div>
<div>SHEET DESCRIPTION</div> <div>Building Envelope Plan</div>	<div>COUNCIL REF:</div> <div>LGA Penrith</div>	<div>SCALE</div> <div>1:1000 at A1 1:2000 at A3</div>	<div>PLOT DATE</div> <div>07/03/2017</div>	<div>DWG. REVISION</div> <div>L</div>	<div>OF SHEETS</div> <div>1</div>