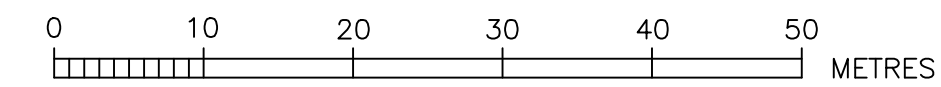
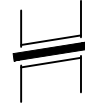
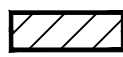
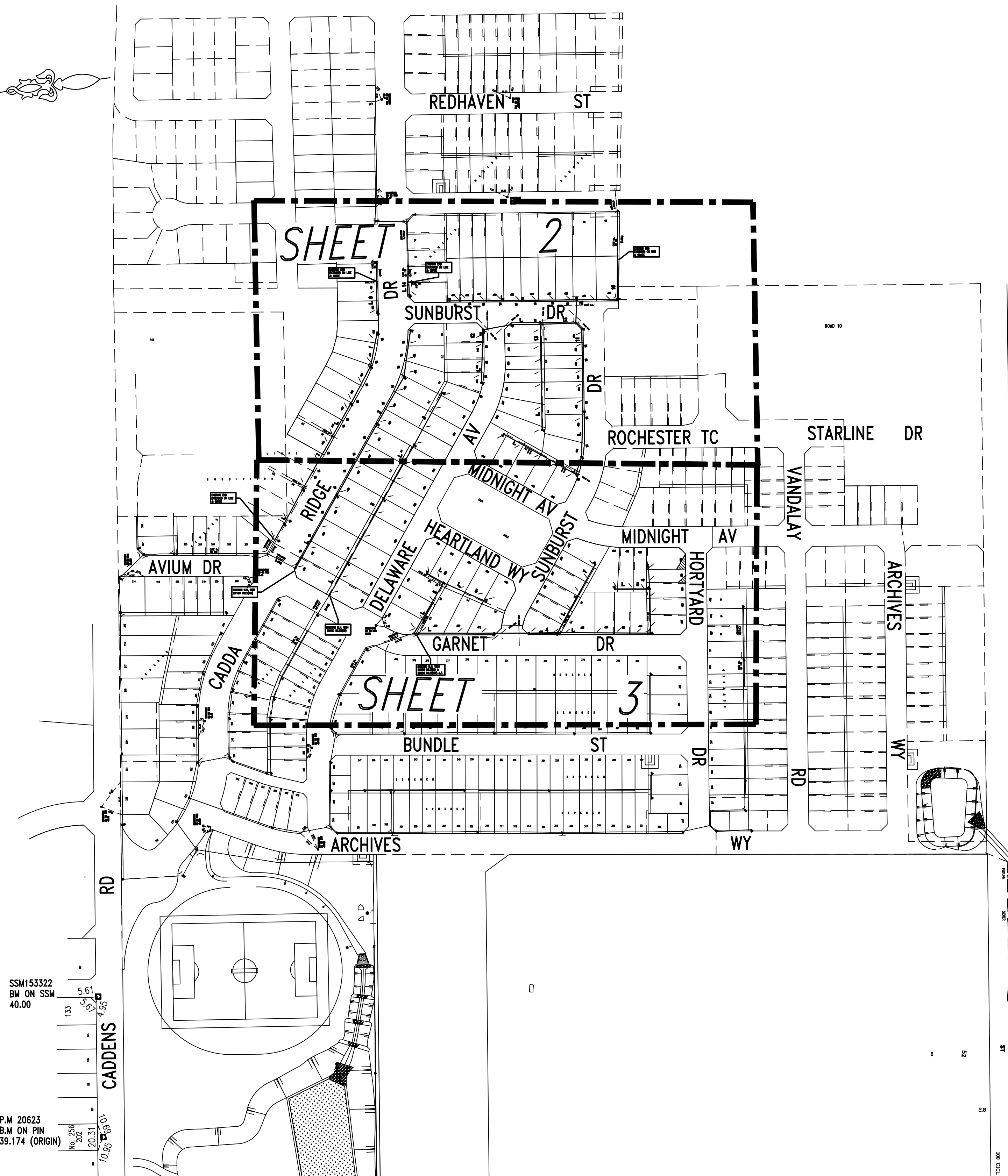


# DEVELOPER CONTRACT PLAN WORK-AS-CONSTRUCTED



1. DESIGNER AND WATER SERVICE COORDINATOR:  
QALCHEK PTY LTD (CERTIFIED No.289)  
77 UNION RD. PENRITH NSW 2750  
PH. No. (02) 4722 8181
- FOR: LEGPRO PTY LTD ATF LEGPRO 54 PTY LTD  
LEVEL 27 – 19–29 MARTIN PLACE SYDNEY N.S.W 2000  
PH: 92521111
2. THE WORKS AND MATERIALS ARE IN ACCORDANCE WITH THE SEWERAGE RETICULATION CODE OF AUSTRALIA (WSA 02–2002–2.2 VERSION 3) INCLUDING THE SYDNEY WATER SUPPLEMENT AND APPENDICES AND THE TECHNICAL SPECIFICATION FOR LEAK TIGHT SEWER SYSTEMS (VERSION 8) 17–12–2014.
3. ALL STRUCTURES CONSTRUCTED TO FINISHED SURFACE LEVELS.  
ALL LEVELS REFER TO FINISHED SURFACE LEVEL.
4. ALL BUILDING LAYOUTS, FINISHED SURFACE LEVELS, STORMWATER INFORMATION, AND GENERAL CIVIL ENGINEERING DETAILS TAKEN FROM JMYNDHAM PRINCE ENGINEERING PLANS REFERENCE DRAFT PLANS 110358/CC204 REVISION 'A' DATED '18-05-2017'
5. THE MINIMUM NUMBER OF FIELD COMPACTION TESTS CONDUCTED TO SATISFY THE SEWERAGE CODE OF AUSTRALIA ARE:  
SAND/CEMENT BACKFILL IS USED AT ROAD CROSSINGS. (LETTER PROVIDED)
- PIPE EMBEDMENT ZONE: 0 TESTS CONDUCTED (LETTER PROVIDED)
- TRENCH FILL ZONE (TRAFFICABLE): 0 TESTS CONDUCTED (LETTER PROVIDED)
- TRENCH FILL ZONE (NON TRAFFICABLE): 31 TESTS CONDUCTED
- TRENCH FILL ZONE (MAINTENANCE STRUCTURES): 67 TESTS CONDUCTED
- TRENCH FILL ZONE – TOTAL: 98 TESTS CONDUCTED
6. BUILDING OVER/ADJACENT TO SEWER – CONDITIONS MAY APPLY. REFER TO QALCHEK FOR DETAILS.
7. ALL EXCAVATION, SHORING EXCAVATION AND STABILITY OF ADJACENT STRUCTURES/SERVICES/DWELLINGS WAS THE RESPONSIBILITY OF THE CONSTRUCTOR.
8. ~~ALL~~ PSC CONNECTIONS TO I.S. ARE AT 0.7m & 45° TO MAIN UNLESS OTHERWISE INDICATED.  
~~IT~~ IT DENOTES STANDARD PCS CONNECTION (REFER DTC–2120 ISSUE A DATE 18.03.15)
9. CONSTRUCTOR ENSURED THAT WORKS ARE CONSTRUCTED IN ACCORDANCE WITH SYDNEY WATER'S DEEMED TO COMPLY DRAWINGS:
- FOR ALL MH'S DTC–2000 (ISSUE C 18–03–15), DTC–2220 (ISSUE D 18–03–15), DTC–2221 (ISSUE B 01.03.13), DTC–2222 (ISSUE C 18–03–15),  
DTC–2203 (ISSUE B 18.03.15)
10. PIPES CONCRETE ENCASED SHOWN ACCORDINGLY:–  REFER TO SEW–1205–V
11. AREAS HATCHED THUS NOT DRAINED:– 
12. ALL M.S.'s TO CONFORM TO WSA–137, 'INDUSTRY STANDARD FOR MAINTENANCE SHAFTS AND MAINTENANCE CHAMBERS'
13. W.A.C. PREPARED FROM INFORMATION SUPPLIED (IN PART BY QALCHEK) & BY VINCE MORGAN SURVEYORS PTY LTD

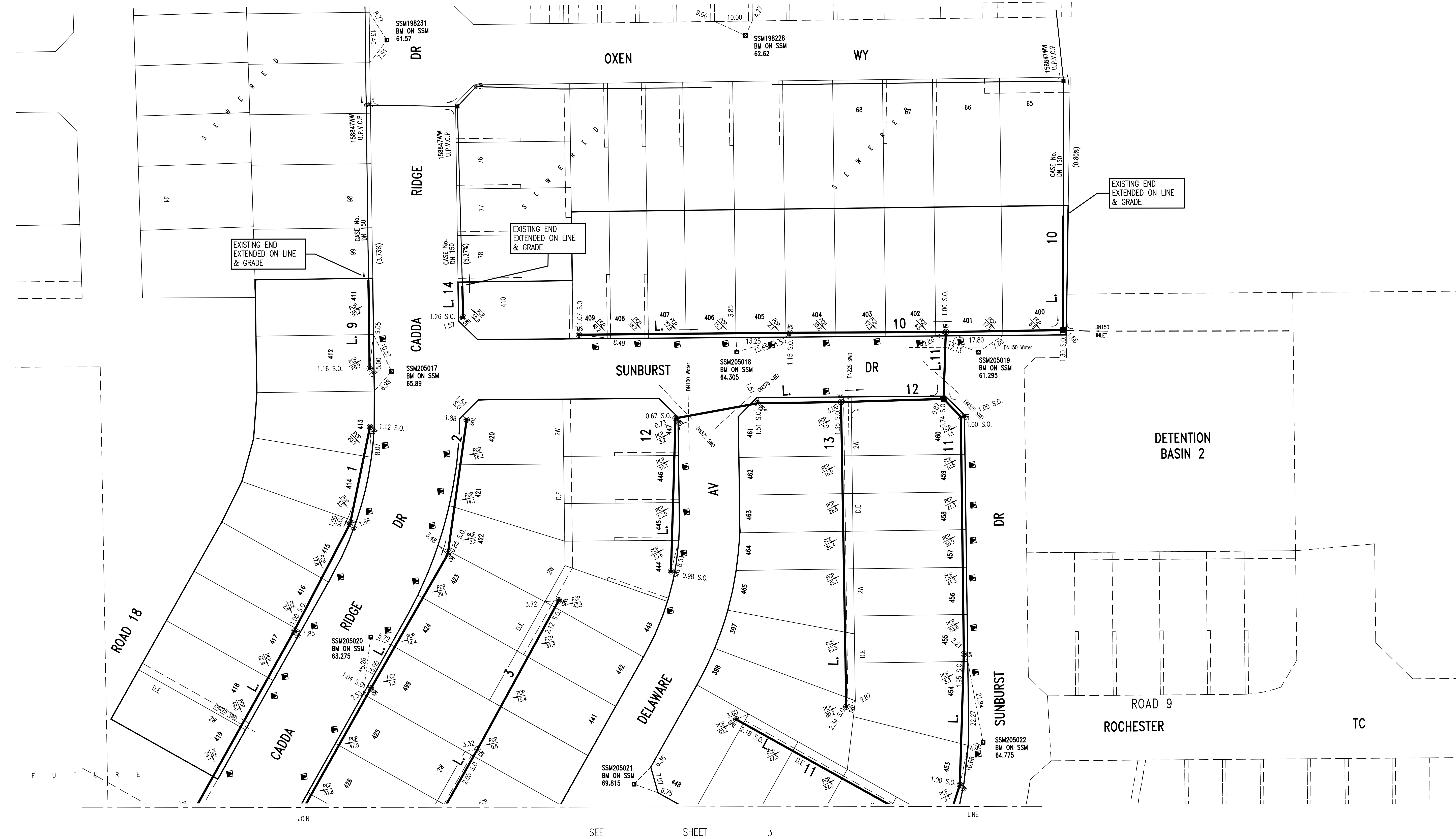
 DENOTES DRIVEWAY  
 DENOTES SERVICED BY CASE 162196WW



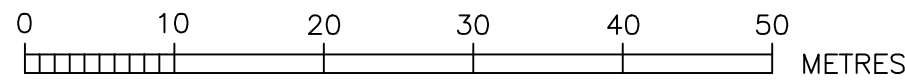
### LOCALITY SKETCH AND ORIGIN OF LEVELS

0	WORK AS CONSTRUCTED	G.M.	03.07.18
A	DRAFT	M.P	23.08.17
No.	AMENDMENT DESCRIPTION	BY	DATE

PLAN TO BE READ IN CONJUNCTION WITH CURRENT SYDNEY WATER STANDARDS SYDNEY WATER CORPORATION		UTILITIES				WORK AS CONSTRUCTED CERTIFICATION				PIPE SCHEDULE				AUSTRALIAN HEIGHT DATUM		NO AMENDMENTS ARE TO BE MADE TO THIS PLAN WITHOUT REFERENCE TO SYDNEY WATER. THIS PLAN IS NOT NECESSARILY UP TO DATE OR CORRECT AND SYDNEY WATER ACCEPTS NO RESPONSIBILITY.		<div><div>Sydney WATER</div><div>SYDNEY WATER CORPORATION</div></div>	
		TYPE	DATE	REF.	TYPE	DATE	REF.	DEVELOPER	SIZE DN	TYPE	CLASS	LENGTH	PIPE JOINING METHOD / NOTES						
WATER: DN100 Water		---	Feb'17	Qolchek	P.M 20623	Sept'17	SCIMS	LEGPRO PTY LTD	150	UPVC	SN8	1553.23	RRJ	Case No. 163828VWW		U.B. DIRECTORY . . . . 184 K4 (42nd Ed.) . . . .		PENRITH SEWERAGE DRAINS TO ST MARYS ST0011	
STORMWATER: SWD --- SWD		Feb'17	Jwp				WATER SERVICE CO-ORDINATOR QALCHEK PTY LTD	100	UPVC	SN10	72.8	SWJ (NOTE 8)							
PRIOR TO COMMENCEMENT OF EXCAVATION FOR PROPOSED AND EXISTING SERVICES CONTACT:-								CONSTRUCTOR FLUID PTY LTD						PLAN . 1:500 . SECTION HOR. 1:500 VERT. 1:125		CROSS SECTIONS . . . . NATURAL		SHEET . 1 . OF . 7 . File No. . N/A .	
DIAL BEFORE YOU DIG Ph.1100 ELECTRICITY ENDEAVOUR ENERGY Ph.131 003 GAS JEMENA GAS Ph.1300 880 906 TELECOMMUNICATIONS, TELSTRA Ph.1800 114 918 SYDNEY WATER Ph.132 092 GIVING AT LEAST 48 HOURS NOTICE.							COMPLETED 22.06.2018 W.A.C. PREPARED 03.07.2018												
								DESIGNER QALCHEK PTY LTD						DESIGN HEAD, . . . m NO BOUNDARY TRAPS REQUIRED.		LENGTH, DEPTHS & LEVELS ARE IN METRES.			
								I CERTIFY THAT THE WORKS HAVE BEEN CONSTRUCTED IN ACCORDANCE WITH THE WORK AS CONSTRUCTED DRAWINGS.											



0	WORK AS CONSTRUCTED	G.M.	03.07.18
A	DRAFT	M.P.	23.08.17
No.	AMENDMENT DESCRIPTION	BY	DATE



WORK AS CONSTRUCTED CERTIFICATION		Sydney WATER	
DEVELOPER	LEGPRO PTY LTD	CONTRACTOR	FLUID PTY LTD
W.S.C.	QALCHEK PTY LTD	COMPLETED	22.06.2018
W.A.C. PREPARED	03.07.2018	DESIGNER	QALCHEK PTY LTD
I CERTIFY THAT THE WORKS HAVE BEEN CONSTRUCTED IN ACCORDANCE WITH THE WORK AS CONSTRUCTED DRAWINGS		FOR DETAILS OF SERVICES SEE SHEET 1	



EXISTING END  
EXTENDED ON LINE  
& GRADE

EXISTING M.H. WITH  
DN150 INLET(NW)

EXISTING M.H. WITH  
DN150 INLET(NW)

EXISTING M.H. WITH  
DN150 INLET(N) &  
DN150 INLET(NW)-L.5

SSM204696  
BM ON SSM  
45.40

SSM204697  
BM ON SSM  
48.815

SSM205023  
BM ON SSM  
68.18

SSM205024  
BM ON SSM  
67.705

SSM205025  
BM ON SSM  
64.91

SSM204703  
BM ON SSM  
58.60

SSM204702  
BM ON SSM  
51.65

CASE No.  
DN 150

162195WW  
U.P.V.C.P.  
(1.62%)

162195WW  
U.P.V.C.P.  
(1.62%)

162195WW  
U.P.V.C.P.  
(0.90%)

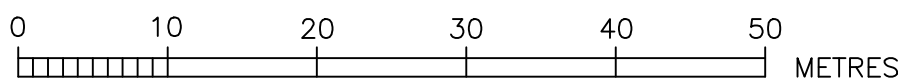
162195WW  
U.P.V.C.P.  
(1.40%)

CASE No.  
DN 150

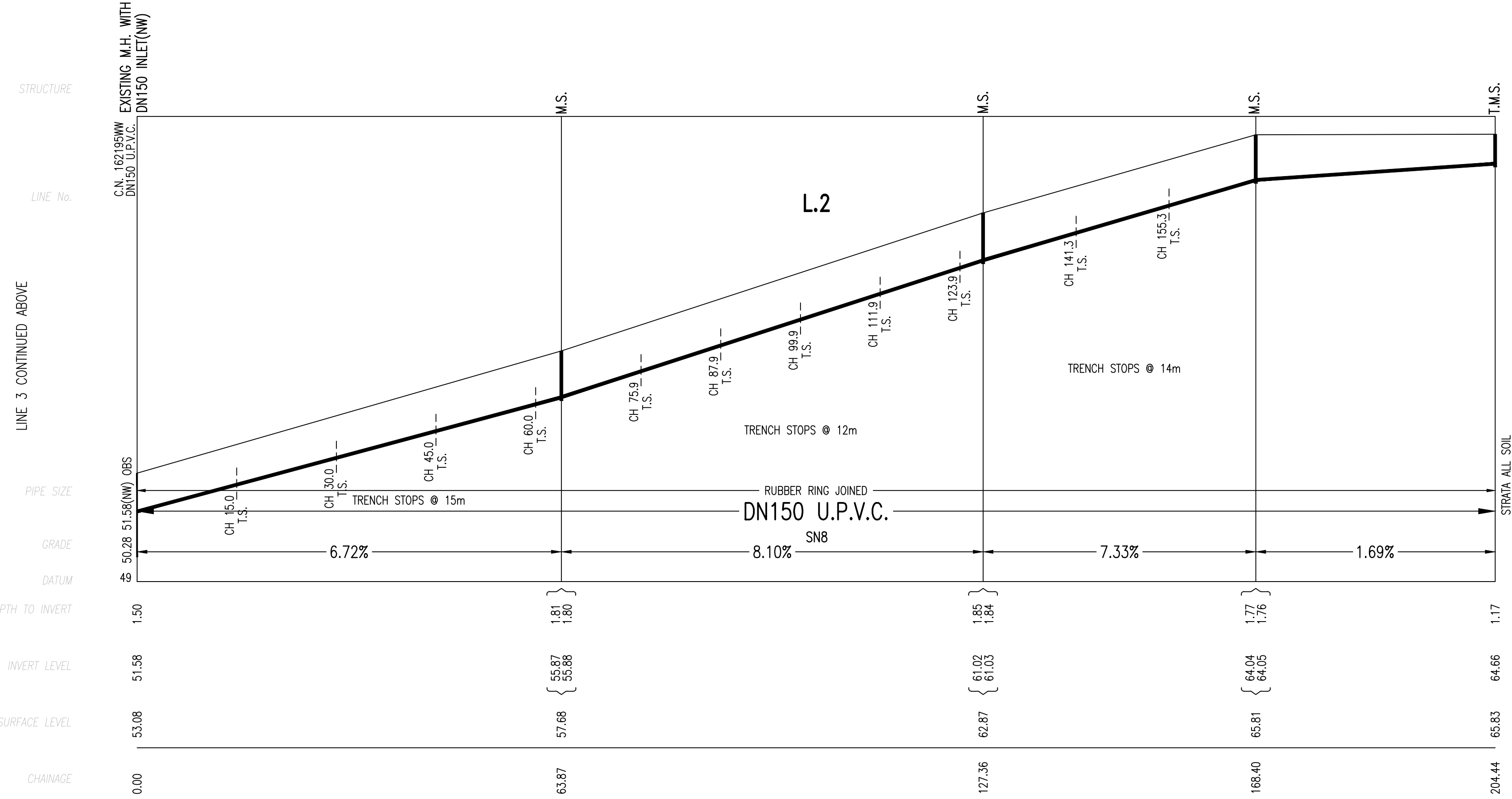
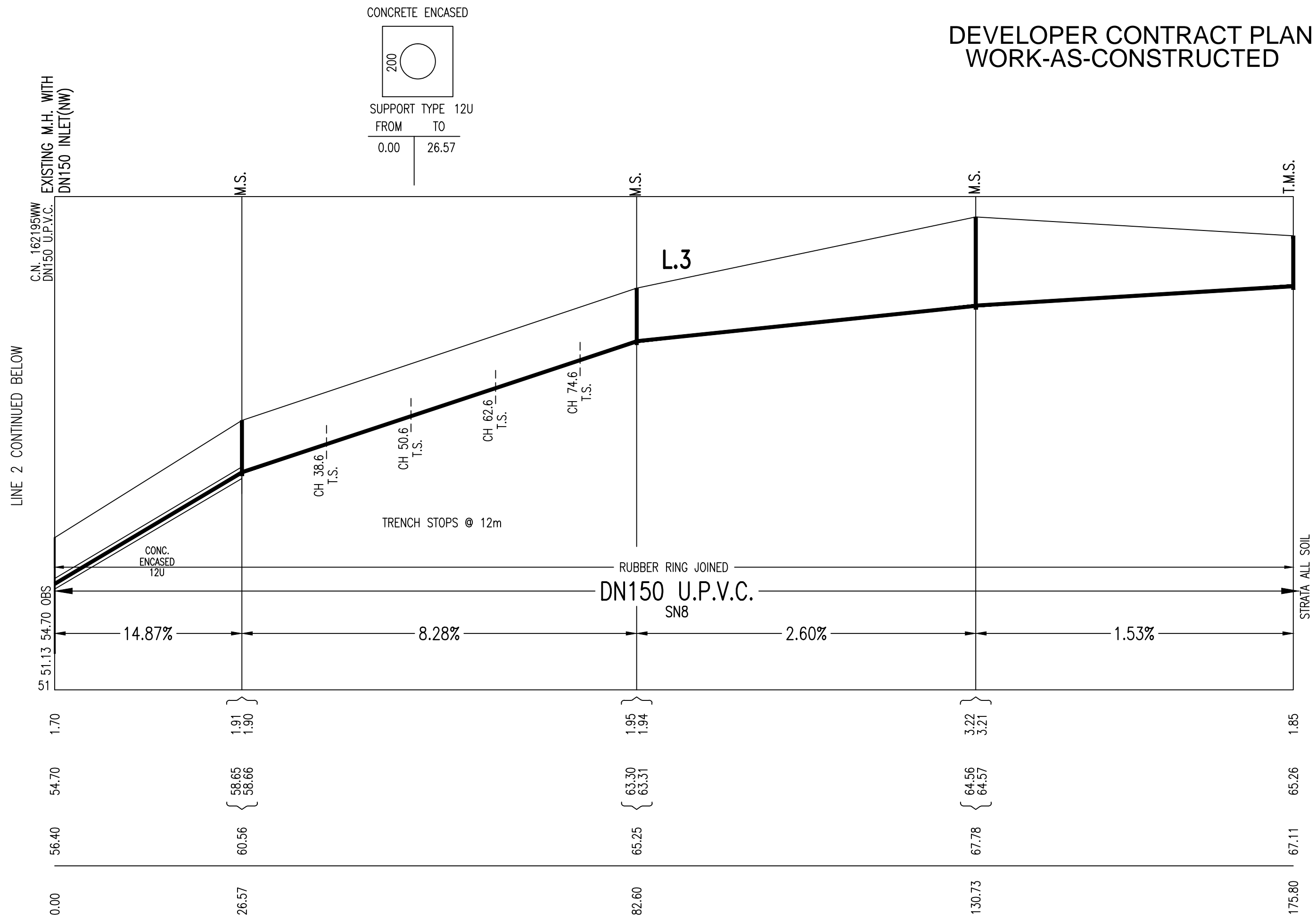
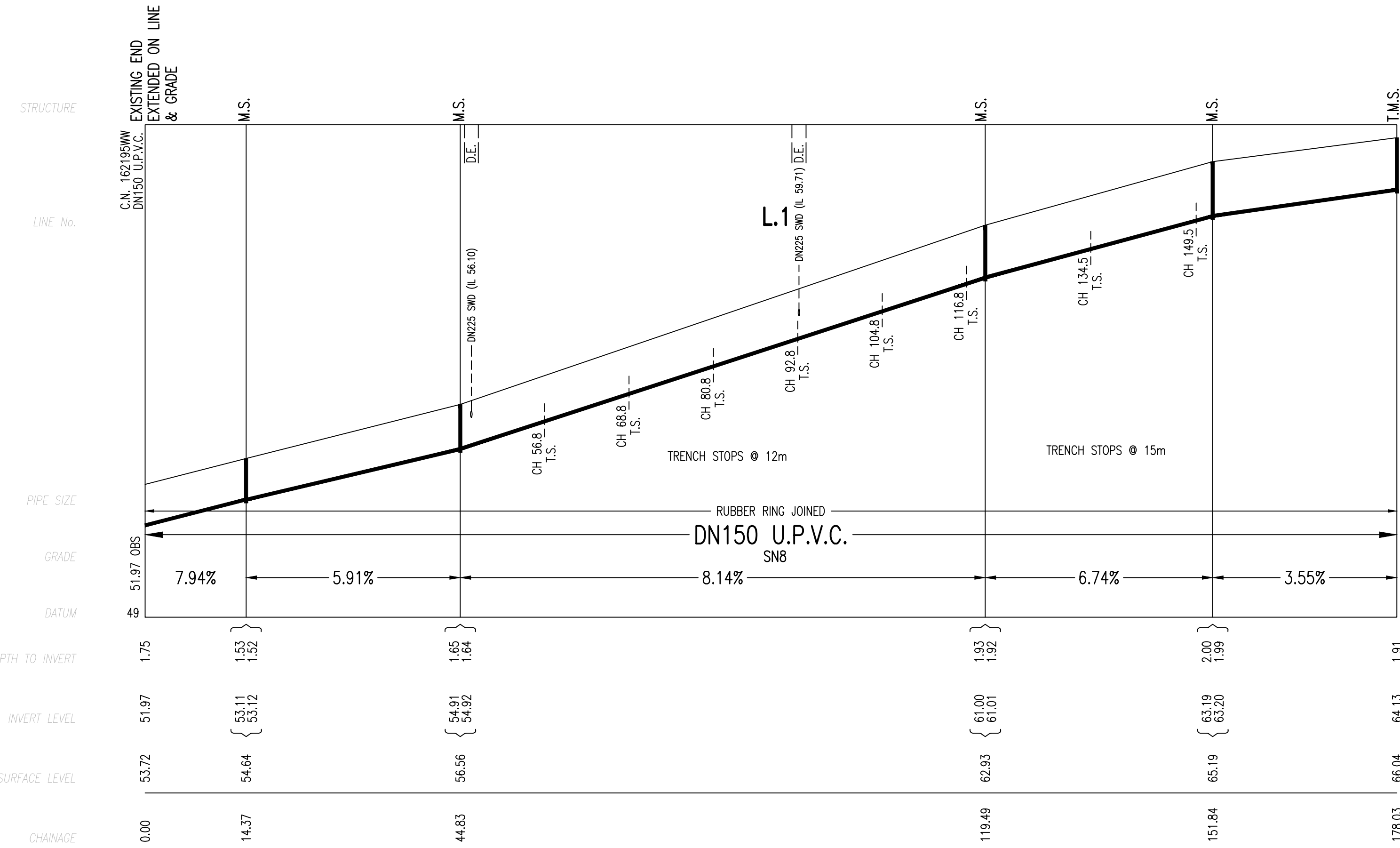
CASE No.  
DN 150

CASE No.  
DN 150

0	WORK AS CONSTRUCTED	G.M.	03.07.18
A	DRAFT	M.P.	23.08.17
No.	AMENDMENT DESCRIPTION	BY	DATE



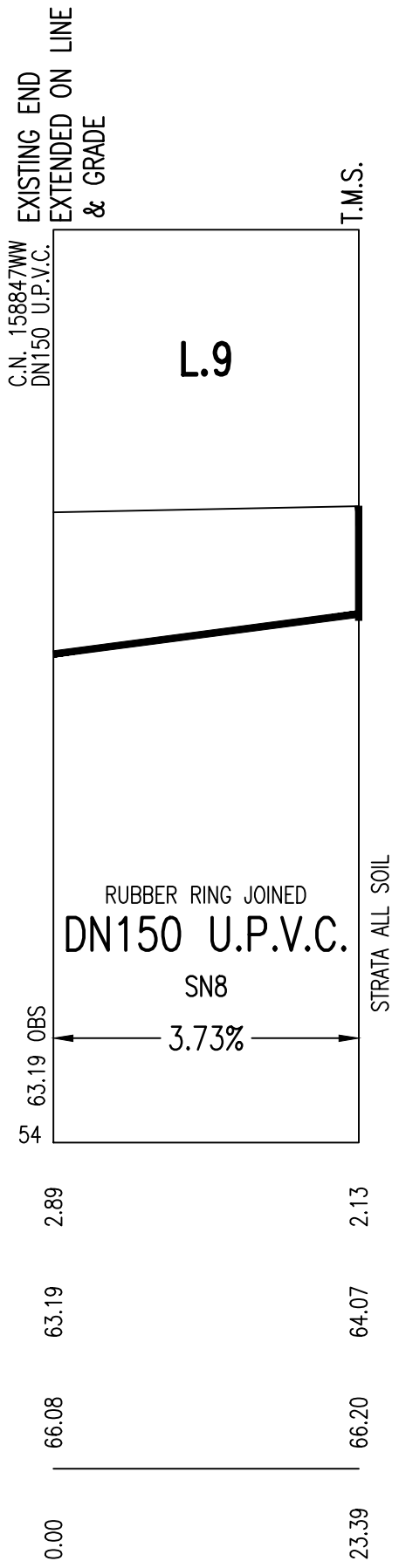
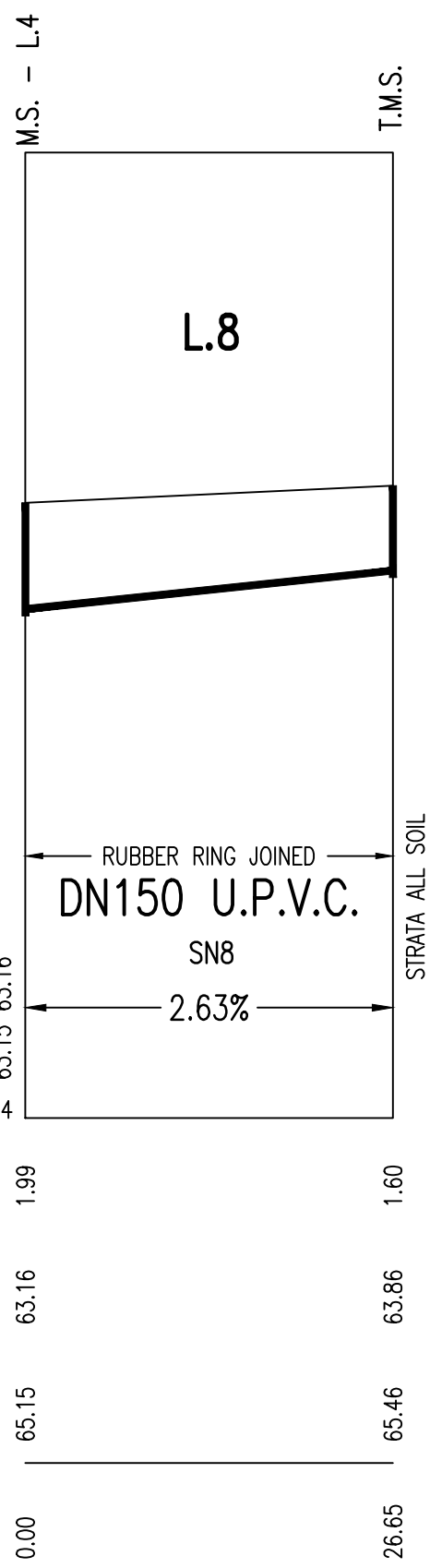
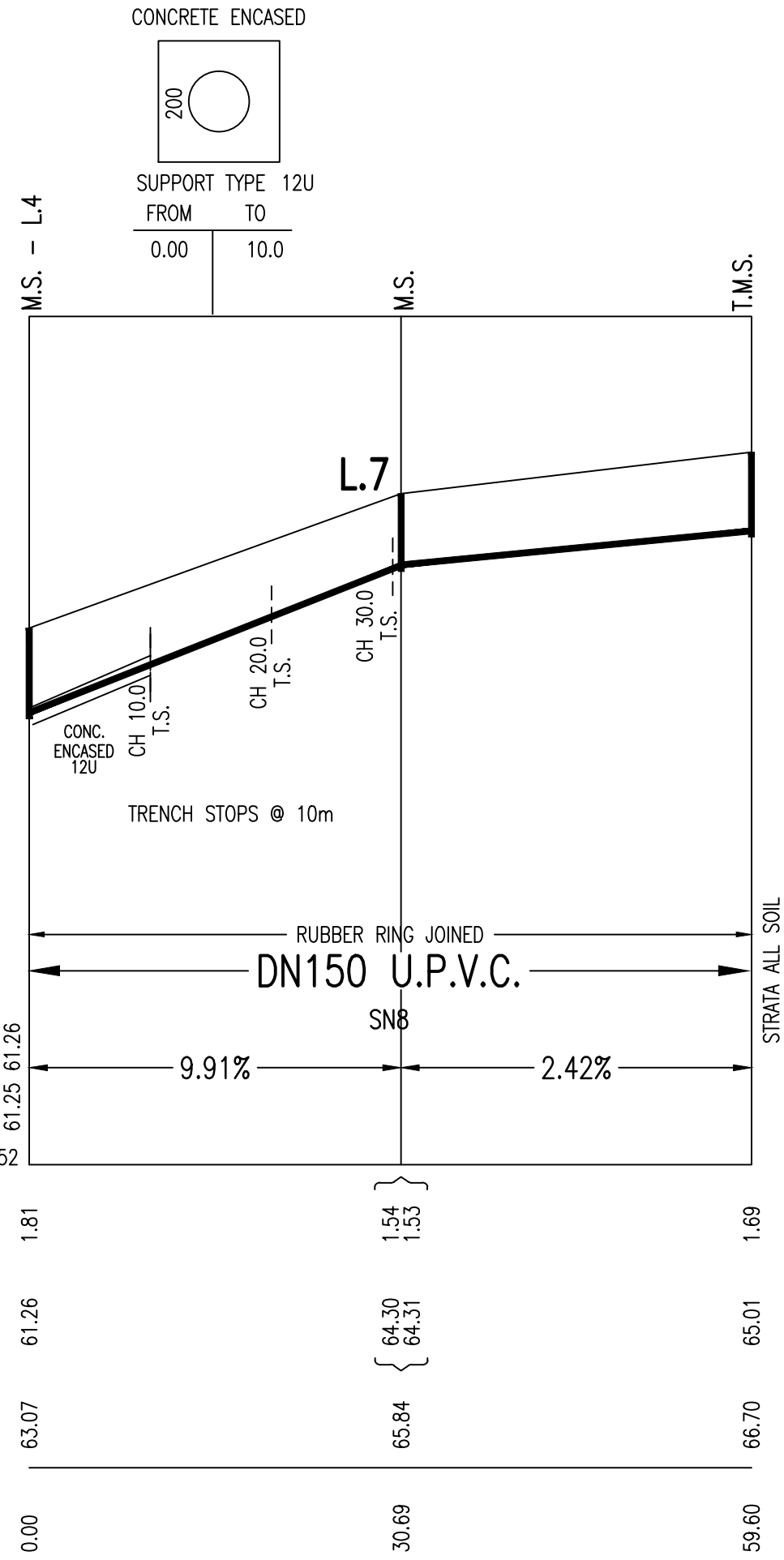
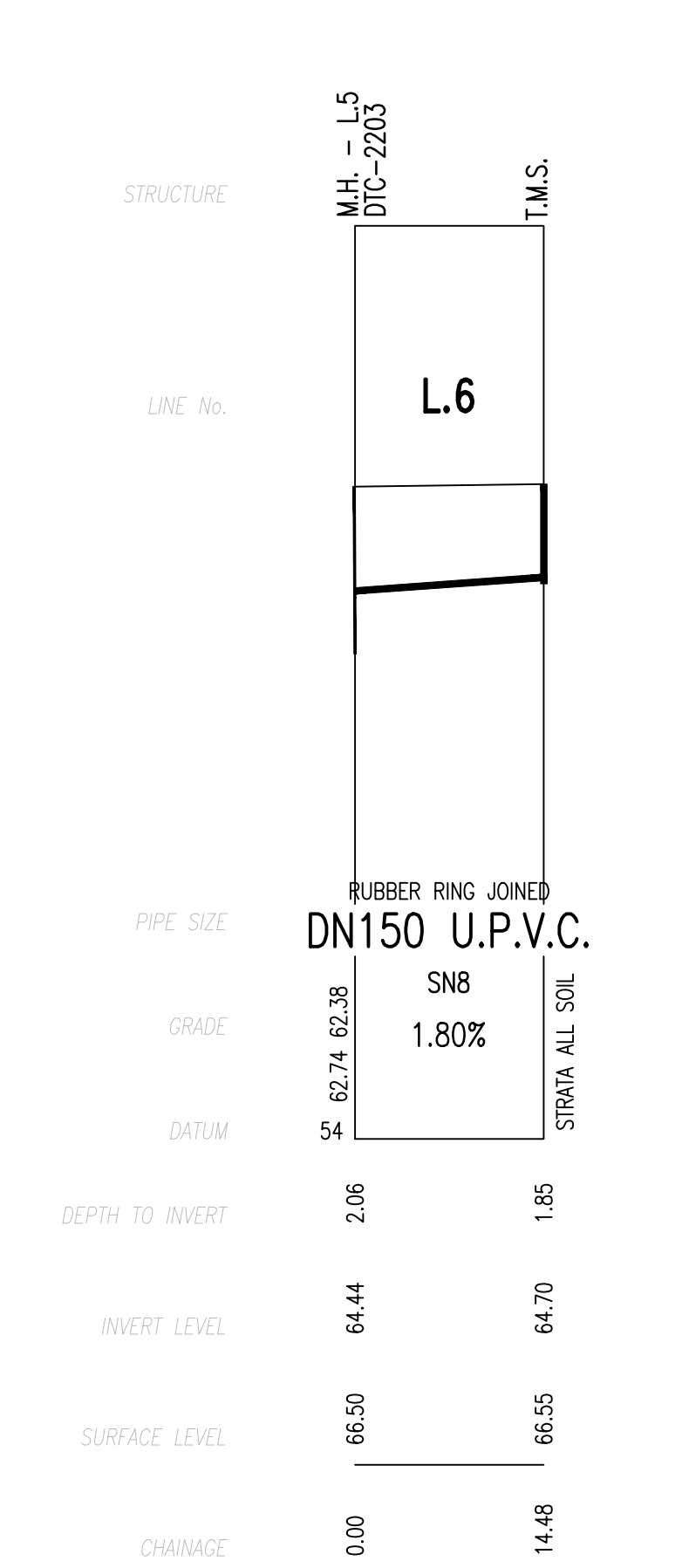
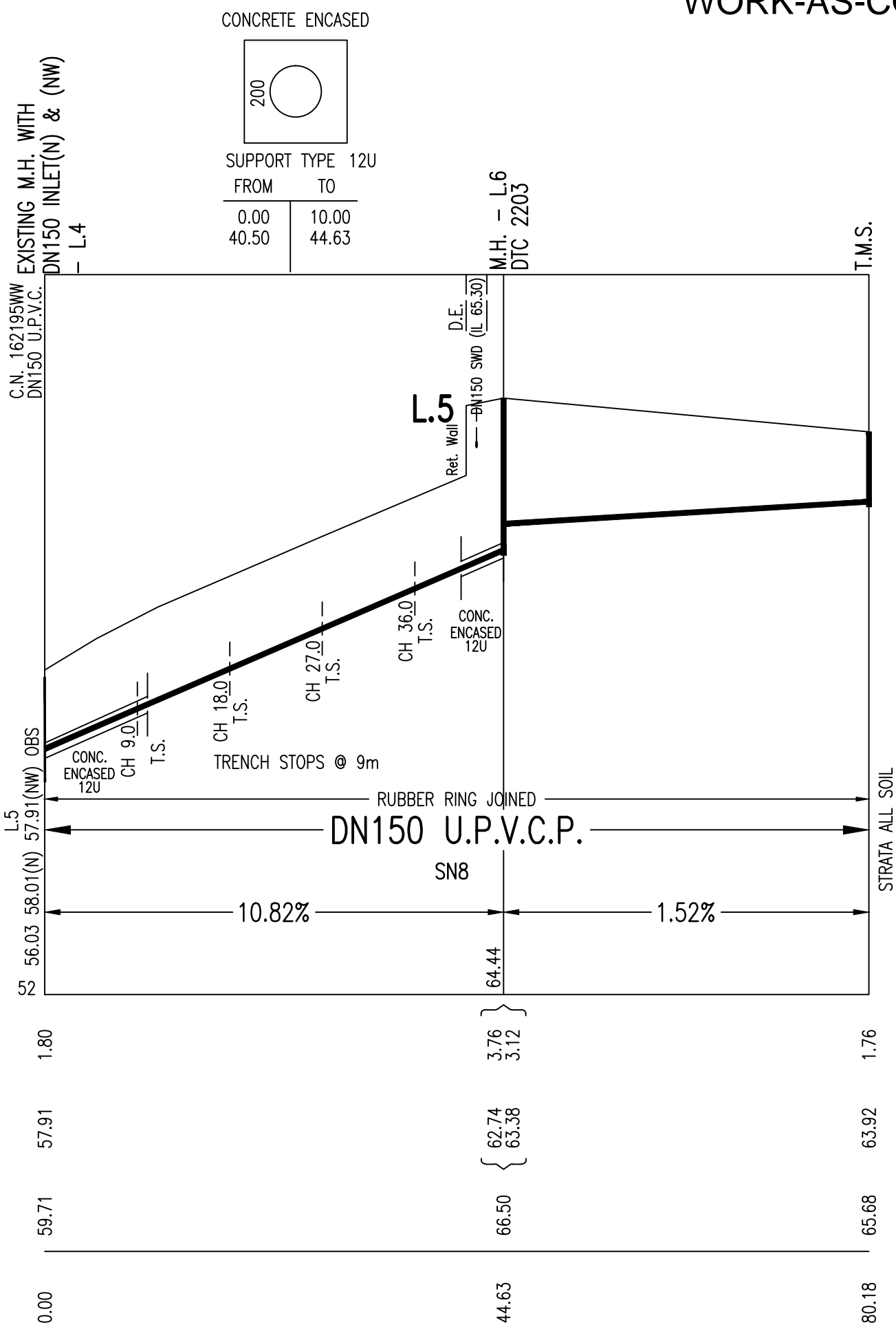
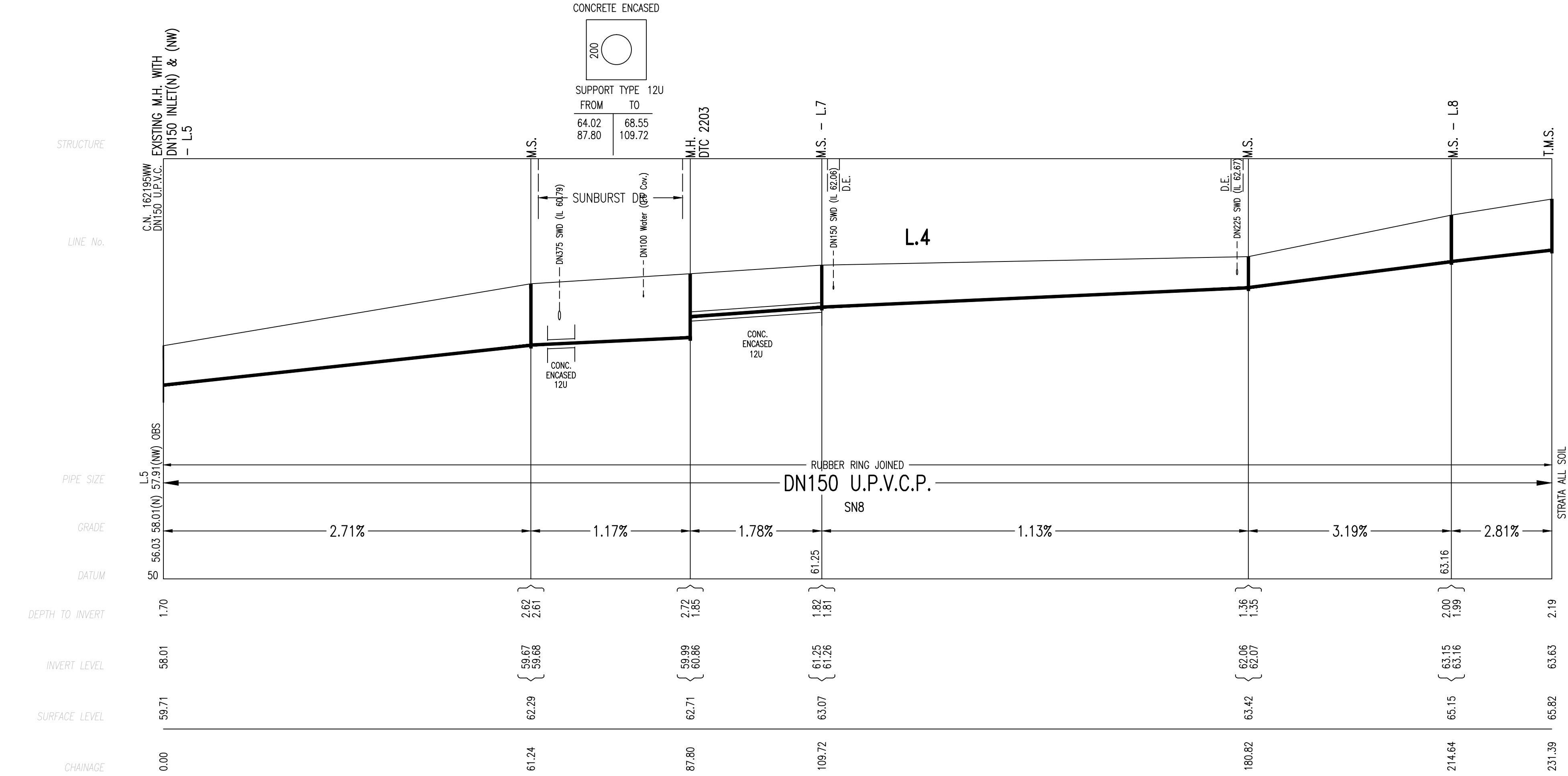
WORK AS CONSTRUCTED CERTIFICATION		Sydney WATER	
DEVELOPER	LEGPRO PTY LTD	W.S.C.	QALCHEK PTY LTD
CONSTRUCTOR	FLUID PTY LTD	COMPLETED	22.06.2018
W.A.C. PREPARED	03.07.2018	Case No. 163828WW SHT 3 OF 7 SHTS.	
DESIGNER	QALCHEK PTY LTD	SYDNEY WATER CORPORATION	
I CERTIFY THAT THE WORKS HAVE BEEN CONSTRUCTED IN ACCORDANCE WITH THE WORK AS CONSTRUCTED DRAWINGS		FOR DETAILS OF SERVICES SEE SHEET 1	



0	WORK AS CONSTRUCTED	G.M.	03.07.18
A	DRAFT	M.P	23.08.17
No.	AMENDMENT DESCRIPTION	BY	DATE

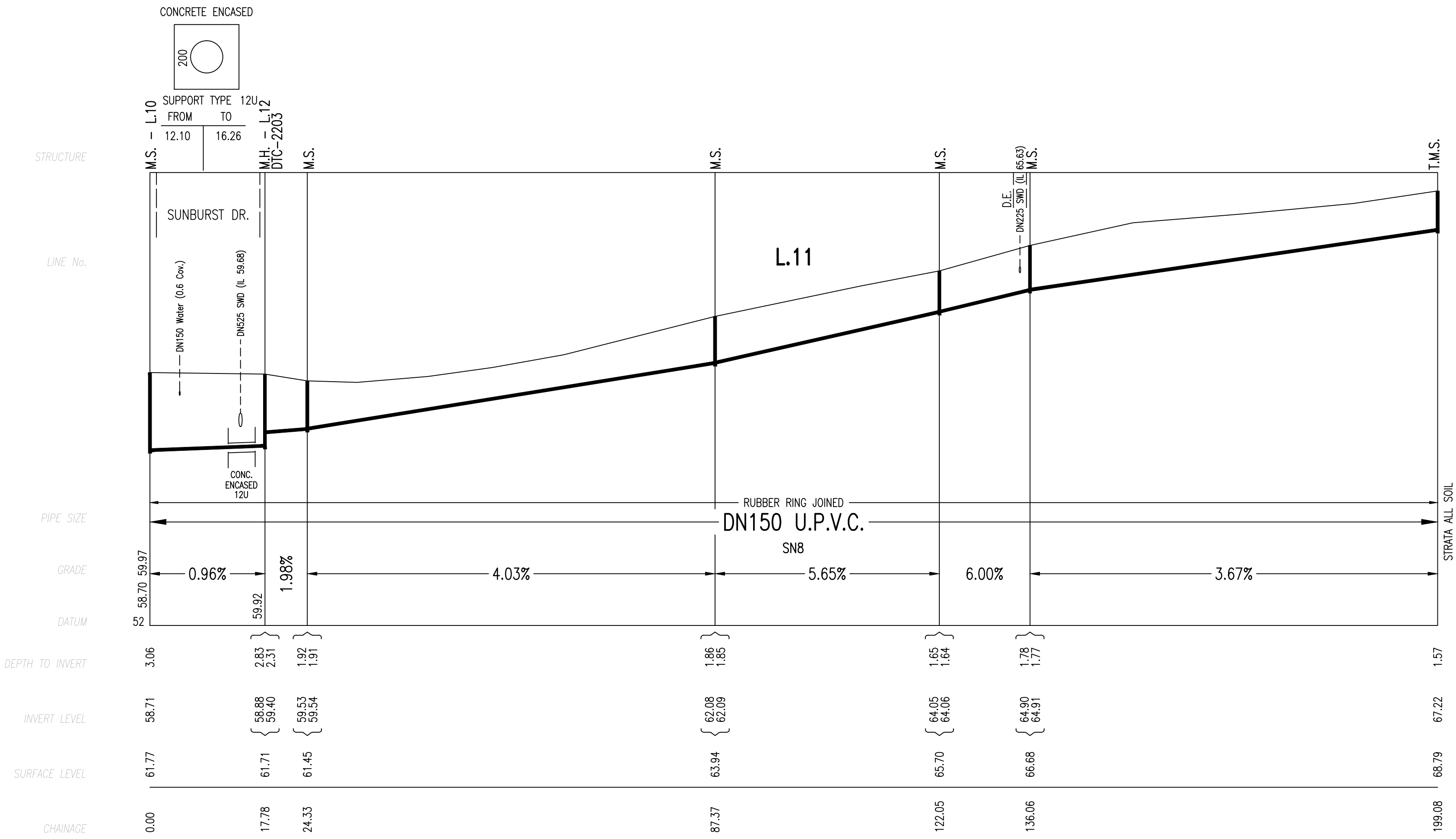
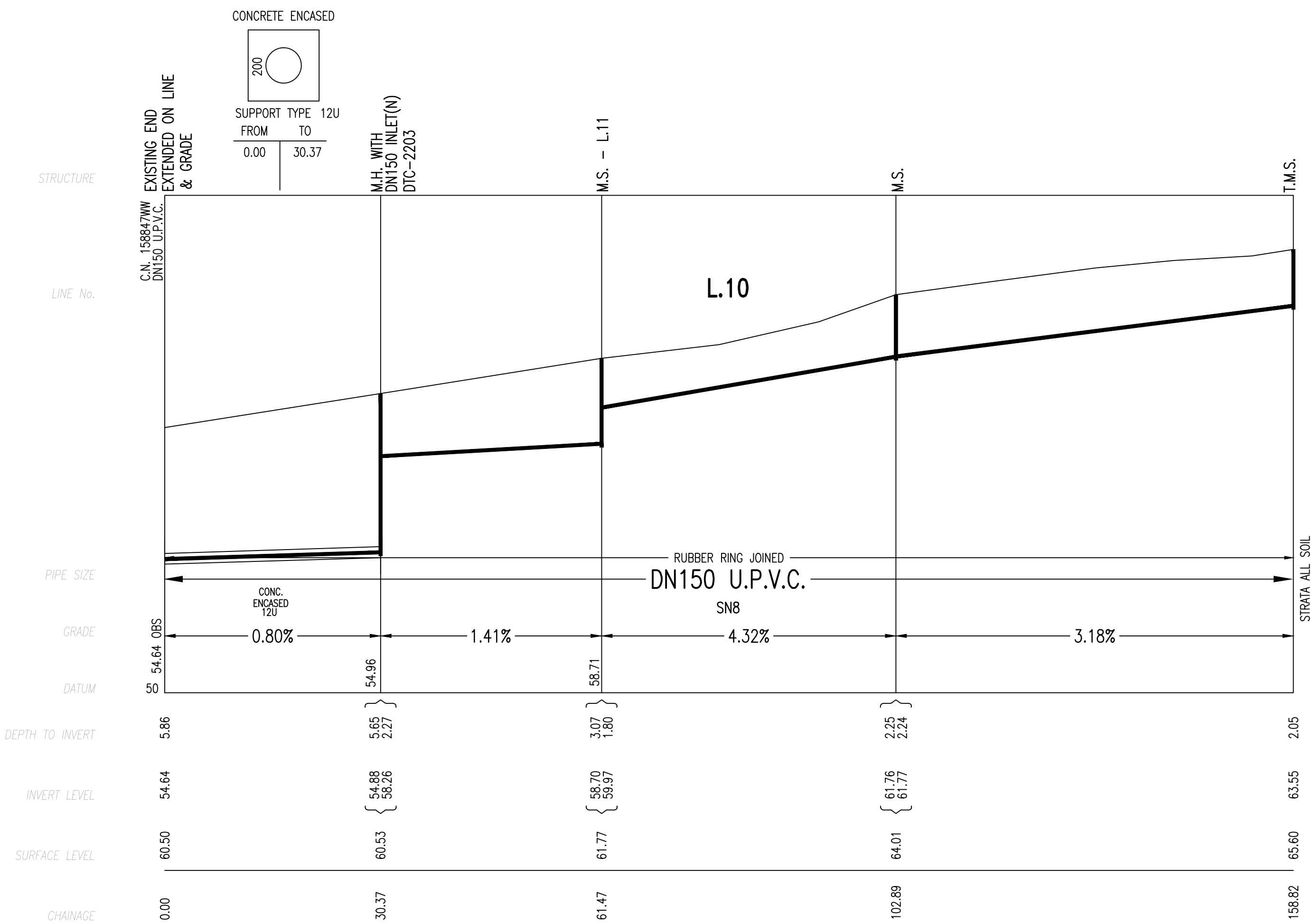
WORK AS CONSTRUCTED CERTIFICATION		SYDNEY WATER CORPORATION	
DEVELOPER	LEGPRO PTY LTD	<b>Sydney WATER</b>	
W.S.C.	QALCHEK PTY LTD		
CONSTRUCTOR	FLUID PTY LTD	Case No. 163828WW SHT 4 OF 7 SHTS.	
COMPLETED	22.06.2018	SYDNEY WATER CORPORATION FOR DETAILS OF SERVICES SEE SHEET 1	
W.A.C. PREPARED	03.07.2018		
DESIGNER QALCHEK PTY LTD			
I CERTIFY THAT THE WORKS HAVE BEEN CONSTRUCTED IN ACCORDANCE WITH THE WORK AS CONSTRUCTED DRAWINGS			





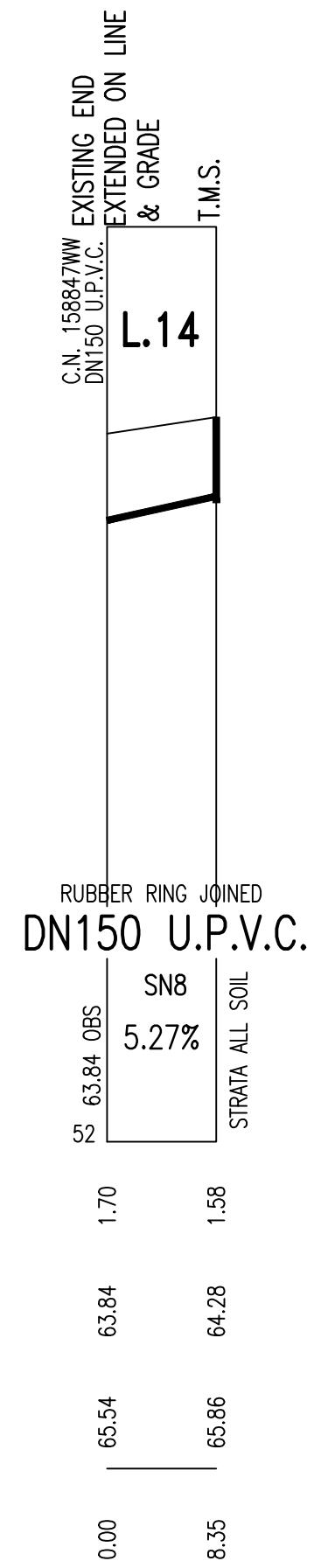
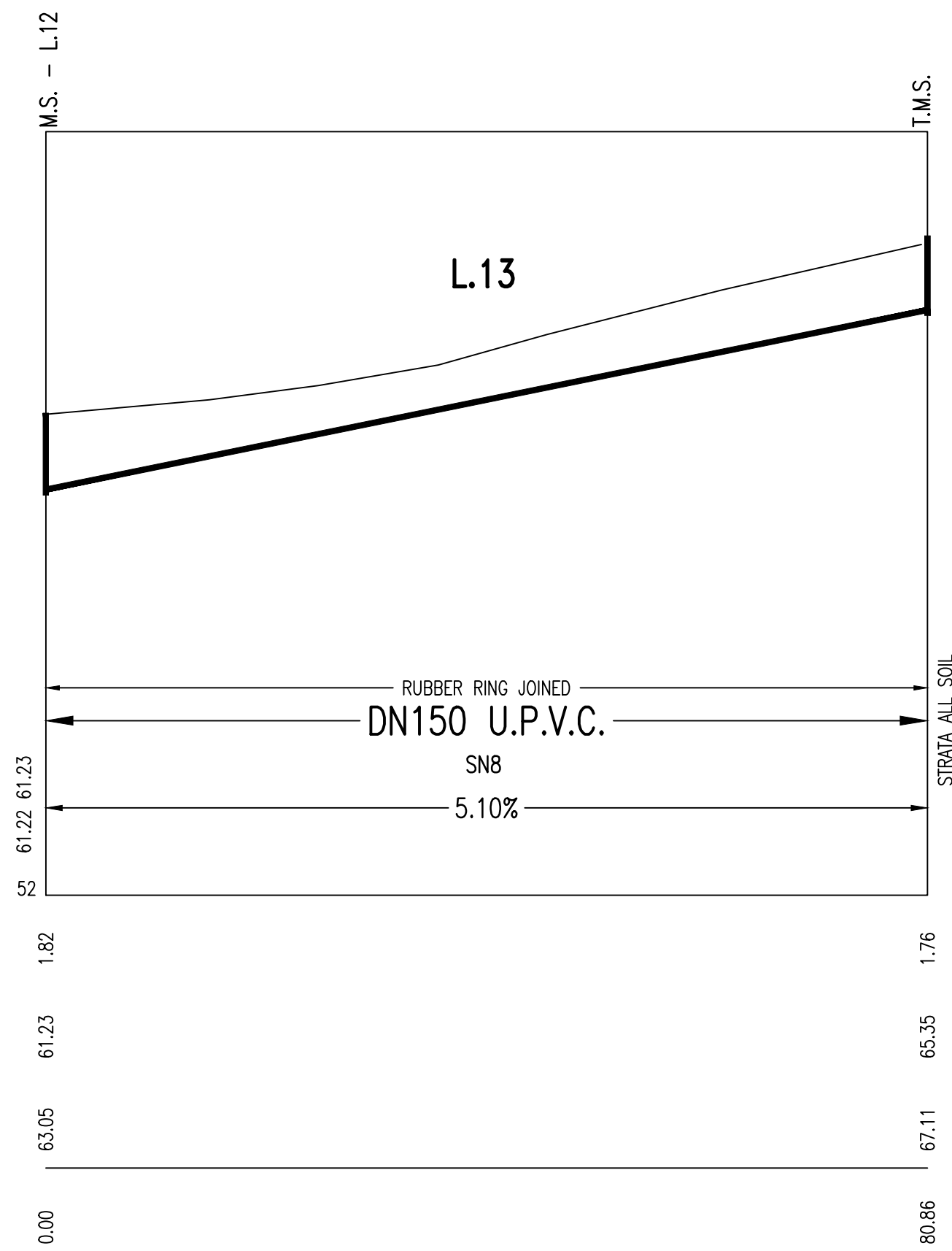
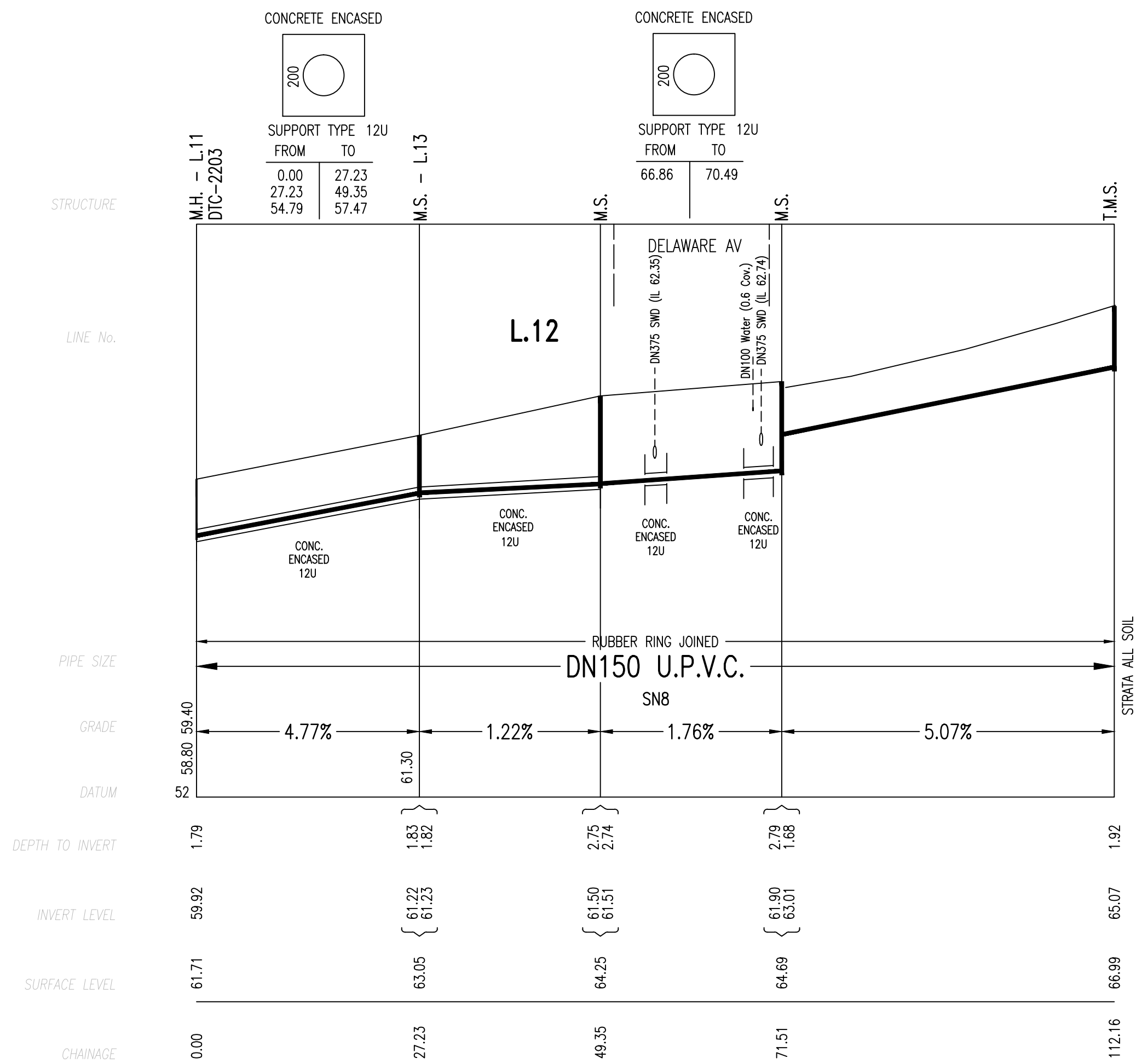
WORK AS CONSTRUCTED CERTIFICATION				SYDNEY WATER CORPORATION	
DEVELOPER	LEGPRO PTY LTD	DESIGNER	QALCHEK PTY LTD	<b>Sydney WATER</b>	
W.S.C.	QALCHEK PTY LTD	CONSTRUCTOR	FLUID PTY LTD		
COMPLETED	22.06.2018	W.A.C. PREPARED	03.07.2018	Case No. 163828WW	SHT 5 OF 7 SHTS.
I CERTIFY THAT THE WORKS HAVE BEEN CONSTRUCTED IN ACCORDANCE WITH THE WORK AS CONSTRUCTED DRAWINGS				SYDNEY WATER CORPORATION	
				FOR DETAILS OF SERVICES SEE SHEET 1	

0	WORK AS CONSTRUCTED	G.M.	03.07.18
A	DRAFT	M.P.	23.08.17
No.	AMENDMENT DESCRIPTION	BY	DATE



0	WORK AS CONSTRUCTED	G.M.	03.07.18
A	DRAFT	M.P	23.08.17
No.	AMENDMENT DESCRIPTION	BY	DATE

WORK AS CONSTRUCTED CERTIFICATION		Sydney WATER	
DEVELOPER	LEGPRO PTY LTD	Case No. 163828WW SHT 6 OF 7 SHTS.	
W.S.C.	QALCHEK PTY LTD		
CONSTRUCTOR	FLUID PTY LTD		
COMPLETED	22.06.2018		
W.A.C. PREPARED	03.07.2018	FOR DETAILS OF SERVICES SEE SHEET 1	
DESIGNER	QALCHEK PTY LTD		
I CERTIFY THAT THE WORKS HAVE BEEN CONSTRUCTED IN ACCORDANCE WITH THE WORK AS CONSTRUCTED DRAWINGS		SYDNEY WATER CORPORATION	



0	WORK AS CONSTRUCTED	G.M.	03.07.18
A	DRAFT	M.P	23.08.17
No.	AMENDMENT DESCRIPTION	BY	DATE

WORK AS CONSTRUCTED CERTIFICATION		Sydney WATER	
DEVELOPER	LEGPRO PTY LTD	Case No. 163828WW	SHT 7 OF 7 SHTS.
W.S.C.	QALCHEK PTY LTD	FOR DETAILS OF SERVICES SEE SHEET 1	
CONSTRUCTOR	FLUID PTY LTD		
COMPLETED	22.06.2018		
W.A.C. PREPARED	03.07.2018		
DESIGNER	QALCHEK PTY LTD		
I CERTIFY THAT THE WORKS HAVE BEEN CONSTRUCTED IN ACCORDANCE WITH THE WORK AS CONSTRUCTED DRAWINGS			